



Solo II PV

Photovoltaic energy display



We understand that the PV market is increasingly competitive. Therefore, we've designed the Solo II PV generation only display to provide solar panel installers with a great value solution that customers will really benefit from.

Installer Features & Benefits:

- Real-time display of kW generated, ££ earned, CO2 saved and internal temperature
- Compatible with 1-20kW PV arrays that are either single or three phase systems
- Indicates when to switch on appliances
- LED reader for easy installation on and accurate readings
- Shows internal temperature (& external temperature with additional sensor)
- Works independently of the inverter
- Smartphone service
- Online energy service for live information, data storage and analysis
- Boosted signal strength between transmitter and display

With our stylish speedometer design, we display information cleanly, clearly and concisely. The display can show generation over the course of the day, yesterday and last week.

The **Solo II PV** shows when an array is producing enough energy to power high-load appliances (like dishwashers and tumble dryers), making sure that power generated via panels is used at the optimum times for greatest efficiency.

The **Solo II PV** display comes with full access to our online energy management service, **energynote**. **Energynote** automatically takes data from the display via the internet bridge (supplied with the display) and populates an engaging, interactive web service that allows end-users to make comparisons, spot trends and analyse their generation in depth.

Full technical support offered for installers and their customers.



+44 (0)1223 850 210
www.greenenergyoptions.co.uk
sales@greenenergyoptions.co.uk

GREEN ENERGY OPTIONS
Making energy engaging
3 St. Mary's Court, Main Street,
Hardwick, Cambridge,
CB23 7QS, UK



Solo II PV

Technical specification

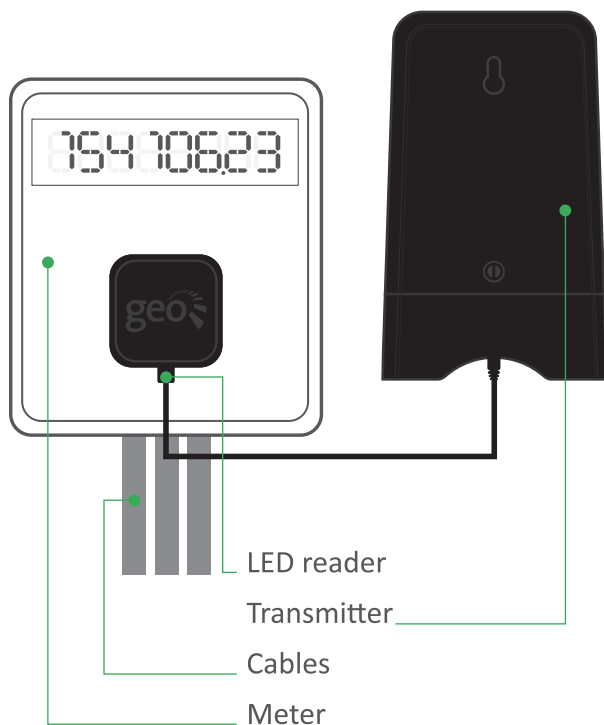
Features & benefits

The Solo II PV is our next generation solar PV solution

- shows live PV generation in kW
- shows money earned from feed-in tariff
- shows internal house temperature
- bridge connection to the internet allows continuous upload to web service and smartphone
- quick and easy installation
- gives recent historical generation information

LED reader

We use an optical reader to take accurate information directly from the generation meter. This means that the Solo II PV display is easy to install and compatible with most generation meters.



Display	
Dimensions	147mm x 72mm x 17mm
Information	power, generation, budget, temperatures, signal strength
History	13 months
Consumption	< 0.5W
Power supply	230Vac, 50Hz country specific PSUs available
Radio	868.3MHz, 25mW max
Display	4 colour PMVA backlit

Transmitter	
Dimensions	114mm x 72mm x 35mm
LED sensor	1.8m cable, 50 to 10000 imp/kWh
Power supply	3 x AA batteries, 2yr life external PSU socket provided
Radio	868.3MHz, 25MW max
Accuracy	meter accurate
Update rate:	3 seconds

Internet Bridge	
Dimensions	85mm x 69mm x 25mm
Connections	100 Base-T Ethernet
Consumption	< 1W
Power supply	mains PSU, 230Vac nominal 50Hz for UK wall socket
DC socket	barrel-type
Radio	868MHz

All subject to change, print version 2.2 - 11.07.2014

Approvals

- EN300328
- EN3000328
- EN60950
- Cat III max voltage 264 Vac
- BS1363
- CE



+44 (0)1223 850 210
www.greenenergyoptions.co.uk
sales@greenenergyoptions.co.uk

GREEN ENERGY OPTIONS
Making energy engaging
 3 St. Mary's Court, Main Street,
 Hardwick, Cambridge,
 CB23 7QS, UK